

A small, solid green square is positioned in the top-left corner of a large, empty rectangular frame that has a thin green border.

Software
Quality Assurance and Testing



Reliability can be programmed

imbus is a specialized solution provider for quality assurance and the testing of software. We provide consulting services for process improvement, software testing, test outsourcing, test tools and training.

With our know-how, the latest tools and our trusted methodology, we are able to increase the performance of software products, individual software components and software-intensive systems. As a manufacturer-independent partner, we also ensure their correct functionality.

Since 1992, the experienced and highly-qualified imbus team has provided a single source for integrated software quality assurance covering the entire software lifecycle. In doing so, we don't rely on isolated measures or the sporadic deployment of test tools. Our consultants get straight to work in the early stages of the development process, thus preventing any expensive defects right from the start and accelerating the software development of our customers.

The daily work done by our experts, all of whom are ISTQB® Certified Testers, is built on the solid foundations of expertise acquired over a period of more than 15 years in around 2,000 successful projects.

As an independent public limited company that is not listed at the stock exchange, we have the potential to realise consulting and implementation projects of any size - reliably and with the highest possible quality standards.

Close to our customers – worldwide

We know that maintaining close proximity to our customers is absolutely essential. For us, proximity means specific knowledge of the industry: knowledge that has been specially adapted to the requirements of the individual customers. Our specialist knowledge covers all of the most important key industries, such as IT, telecommunications, medical solutions, insurance, finance, public administration and the automotive industry.

And for us, proximity also means being only a short distance away. That's why we maintain a network of branch offices in Germany. Internationally, we work in a partner network that makes our solutions available worldwide. Offshoring issues, for example, can be dealt with by imbus Shanghai, our joint venture in China.



imbus AG executive board: Bernd Nossem, Tilo Linz, Thomas Roßner and Jörg Schulten

**Our mission:
top quality, better performance and
convincing test technology from a single source.**



imbus AG headquarters: The head office near Erlangen, Germany

Quality as a principle

Being consistently successful in a competitive market is only possible through continuous optimisation of software development processes. That's why we help our customers to improve their processes and make sure that they have the required sustainability. By using recognised assessment methods, such as Test Process Improvement or the SPICE approach, we make development processes transparent and their performance objectively assessable. Our consultants

propose specific measures for improvement as well as proven best practices, and they are on hand to provide active support during the implementation phase. In doing this, we identify and implement optimisation measures for software testing, whilst keeping in mind the entire lifecycle of the software. The start can be, for example, code inspections or reviews, which can lead on to optimisation of the software maintenance phase and on-hand support during migration projects.

An impressive team

imbus employees have years of experience working on projects, and that means they always have the certainty and professional vision that is needed, even in a difficult project environment. imbus consultants are taught a range of techniques for crisis management, and this, together with their excellent didactic skills and their training in the finer points of facilitation and

presentation, means they are able to demonstrate absolute competence in every project situation. imbus has set up a group-wide system for knowledge management to allow employees direct access to all of imbus's know-how. This comprehensive knowledge pool is of great benefit to our customers – in every single project. Furthermore, our ongoing programme of further education and training ensures that imbus employees are always able to keep their knowledge up-to-date.

Research and product development

By regularly participating in national and international research projects, we are actively involved in defining new standards, norms and processes. And in the course of these projects we also get important ideas to inspire the further development of our technologies and tools.

**The result
for our customers:
a sustainable increase
in productivity –
for sure!**



Automatically better software

The state of the art is tool-based, automated testing. imbus implements advanced solutions for test automation with the deployment of highly-effective products – from our own company and from other providers.

High-end solutions for tool-based testing

The imbus TestBench, our core product for test management and test design, is an innovative solution for the fully-integrated deployment of methods and tools in software testing. The capabilities of the TestBench are supplemented by a variety of peripheral interfaces and extensions that facilitate straightforward test evaluation, up to and including an electronic signature for the test

record in accordance with the legal requirements for signatures. In addition, we offer a selection of frameworks that we can use as a basis to create fast, cost-effective and stable solutions for special tasks. An example of this is the fully-automated, dictionary-based internationalisation test.

As well as deploying the right software tool, another crucial factor is establishing an effective tool chain. Our technology consultants know all about the strengths and

weaknesses of commonly-used, market-relevant software tools. We provide you with any advice you might need to make the right choice. And when the time comes for action, we carry out the implementation, the integration and the customer-specific adaptations. We receive new impetus for the continuous further development of our technologies and tools through our active participation in national and international research projects. That means that with our versatile, highly-effective and flexible products, we can maintain our position as technology leader for test tools.

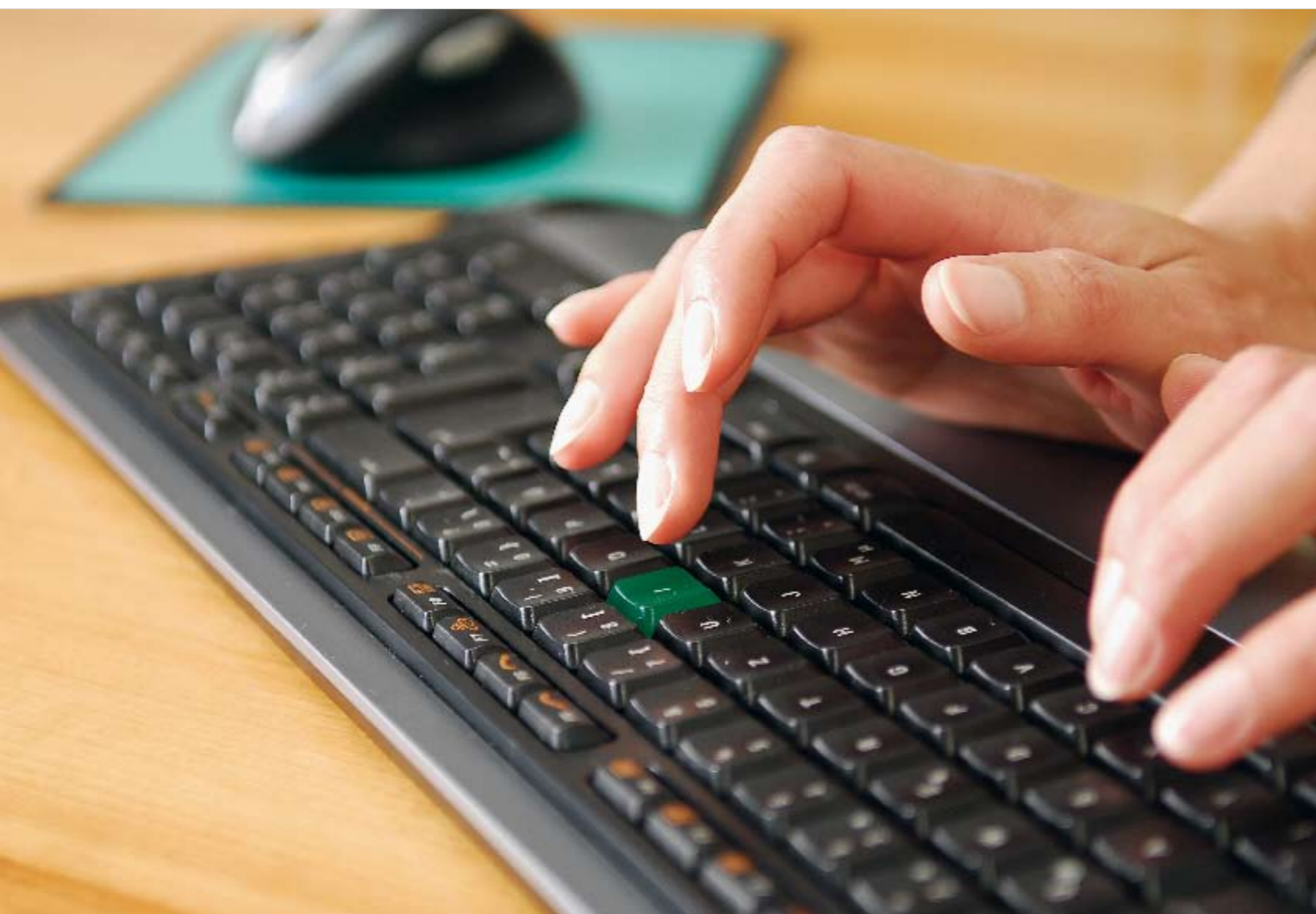


**What we offer you:
The right tool
perfectly integrated.**

Equal to every test

Our services combine consulting, software tools and testing in the most effective manner. We offer everything that our customers require for optimal quality assurance and effective testing: knowledge, infrastructure, workforce and technology.

Providing operative support for our customers is our daily business. Experienced imbus test managers, test designers and test automaters give you fast and effective support for the testing of your software, either at your location or at our own test centre. And our style of support is very much based on maintaining good cooperation. Together with our customers, we ensure the success of the project, and we are always prepared to take on responsibility within the project.



Economic benefit from quality assurance

The sooner software bugs are detected, the easier and more inexpensive it is to correct them. That's why the services we provide are deployed long before the system test. For example, we use testability reviews to assess requirement documents or carry out tool-based code analysis. These checks ensure that software defects are pinpointed at an early stage and generate cost savings by facilitating correction sooner rather than later. And that's how we can help from the very first minute to increase the quality, reliability and performance of your software systems.

Intelligent test outsourcing

Outsourcing at imbus means outsourcing to a partner who is always available, who speaks your language and who is still able to offer all the normal advantages of outsourcing. In fact, the usual imbus quality standards are always guaranteed, regardless of whether or not it is an outsourcing project. And on the subject of quality standards, we are also an authorised software testing centre for TÜV Rheinland, one of Germany's official inspection authorities.

Offshoring China

For projects of a certain size, the utilization of offshore resources can be extremely worthwhile. With imbus as your partner, you will have absolutely no problem at all

with any potential pitfalls such as start-up difficulties, language barriers or the like. Your interface for the duration of the entire project is your local imbus partner – from start to finish. When we set up imbus Shanghai, we took great care to make consistent use of every possible advantage that outsourcing software tests provides. At the same time, we made sure that quality levels are just the same as you are used to from our company in Germany.

Service for data quality and data migration

As a partner of IT departments and data processing centres, we provide highly-efficient services for the automated testing of data consistency, data integrity and data quality during processes such as the entering, processing and archiving of documents or the migration of large data files to optical archives in compliance with legal requirements and auditing procedures.

A good partner for our customers

No matter whether you require test engineers to support your project on site at your location or whether you would like to outsource quality assurance tasks, imbus is always a reliable and flexible partner with certification according to DIN ISO 9001:2000.

Our promise: We complete your testing-related tasks quickly, reliably and with economic benefit for you. Anywhere in the world.

Integrated portfolio

PROCESS CONSULTING

Our common goal: you develop software more quickly, more cost-effectively and with a lower defect rate right from the start. To achieve this goal, we accompany you from the analysis of the current state of your processes (SPICE and Test Process Improvement Assessments) right up to the evaluation, validation and implementation of the appropriate tools.

We support you in setting up an optimal test organisation for your project, your department or your enterprise. One of our main focus points is the establishment of test centres. Here, for example, you can benefit from the experience we have acquired whilst setting up large test centres for various state and federal authorities. Furthermore, the imbus tool specialists help you with the development of a highly-effective production line that integrates test methods and tools for maximum benefit and performance, and supports you with the selection and deployment of tools for test management, automation and test data generators. And in addition, we provide coaching and customizing, as well as providing instructions for tailor-made integration with other products from your software production line.

SOFTWARE TESTING SERVICES

We support IT and development departments with our professional software testing services – on site or through outsourcing.

We carry out professional test management worldwide, and we offer a broad spectrum of testing tasks. These include functional tests, load and performance tests, web tests and embedded tests. We take care of the complete test engineering – from development-related component tests to system or acceptance tests, as well as all dynamic and static test techniques, test methods, test levels and automation solutions.

We have at our disposal highly-qualified and certified staff, modern infrastructure, established processes and methods and all the necessary tools. Our test teams guarantee short response times and rapid and reliable test processing with clearly defined service levels. On request we also assume responsibility for testing components, sub-systems or your complete project

ACADEMY

The imbus Academy passes on well-founded, comprehensive and continuously updated knowledge about software quality assurance and software testing. The knowledge transfer takes place at our own training centre, at one of our other locations or worldwide. All the imbus instructors have a wealth of practical experience from their own specialist areas.

imbus training courses are practice-oriented. Alongside the necessary theoretical background knowledge, our instructors always explain how and in which situation the newly-learnt methods can be optimally applied in the participant's daily working life.

The training material is thoroughly prepared in accordance with educational best practices. A pleasant learning environment and small training groups mean that successful learning is guaranteed.

With more than 4,000 training participants, imbus is one of the market-leading training providers worldwide for software quality management and software testing.

imbus is one of the trailblazers for the international training standard ISTQB® Certified Tester, and we are continuing to work actively and influentially on the further development of this standard at both national and international level.

PRODUCTS

The imbus TestBench: one of the most modern and highly-effective systems for test management and test design.

It provides consistent tool support for all phases of the testing process – from the planning and design of the tests right up to their automation. With the TestBench, tests become modular, maintainable and reusable. The test procedures are quickly and easily assembled from predefined test components.

The TestBench supports work distributed worldwide and, at the same time, fulfils the most stringent requirements for documentation and traceability, including electronic signatures for test records.

The imbus TestBench is a Java-based client-server application, making it entirely platform independent. It goes without saying that we also provide individual customizing support, product training, implementation support and competent product support.

Here's how we help you to develop faster and more reliably

- Accompanying you from process analysis to tool evaluation
- Setting up test centres
- Establishing highly-effective software production lines

Here's how you can benefit from our integrated software testing services

- Professional test management worldwide
- Complete test engineering
- Rapid and reliable test processing

Here's how you can enhance your existing knowledge and create new impetus for your daily work

- Up-to-date knowledge about software quality assurance and software testing
- Theory and daily practice in small groups
- Worldwide market-leading training provider

Here's how you can benefit from the best tool in test management

- Consistent tool support
- Tests are modular and maintainable and can be easily reused
- Individual customizing support, product training, implementation support



imbus AG

Kleinseebacher Str. 9
91096 Möhrendorf
GERMANY
Phone +49 9131 7518-0
Fax +49 9131 7518-50

Other locations:

imbus AG

Unter der Linde 16
80939 Munich
GERMANY
Phone +49 89 3219909-0
Fax +49 89 3219909-50

**New address from 2009
imbus Rhein-Main GmbH**

Kirschgartenstr. 15
65719 Hofheim
GERMANY
Phone +49 6192 92192-0
Fax +49 6192 92192-50

imbus Rheinland GmbH

Volksgartenstr. 36
50677 Cologne
GERMANY
Phone +49 221 998788-0
Fax +49 221 998788-50

**info@imbus.de
www.imbus.de**

**imbus Shanghai
IT Co., Ltd.**

No. 500 BiboRoad
Zhangjiang High-Tech. Park
Pudong
Shanghai 201203
P.R. CHINA
Phone +86 21 50274732
Fax +86 21 50274732-20

**info@imbus.cn
www.imbus.cn**